

# INFORMATION BROCHURE

THE INFANT COMMUNITY - NURSERY (20 MONTHS - 3 YEARS)

THE CHILDREN'S HOUSE (3-6 YEARS)

MONTESSORI PROGRAMME FOR ELEMENTARY EDUCATION (6-12 YEARS)

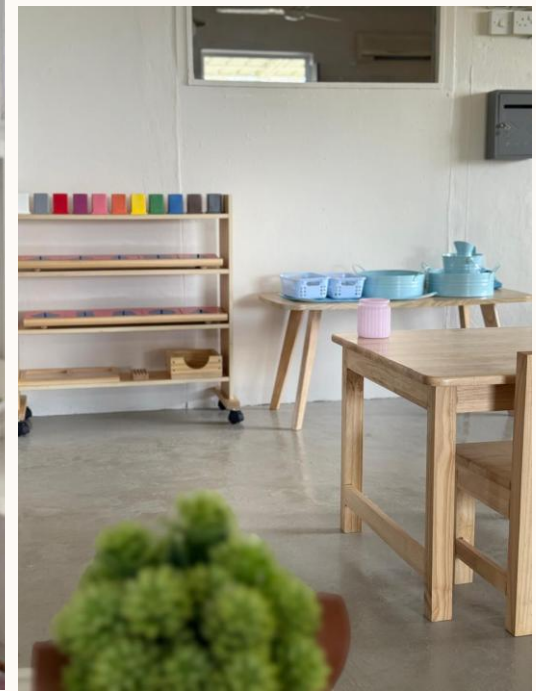




## ÉCOLE MONTESSORI INTERNATIONALE DU NORD

Cognitive Excellence – Bilingual Education  
– Tailored, Individualised Support

« *We support high-potential children in ways  
that conventional schooling cannot fully  
provide!* »





### 3 LEARNING ENVIRONMENT SPECIFICALLY DESIGNED

#### The Infant Community - Nursery

20 months to 3 years

Monday-Friday

7:00 am – 6:00pm

#### The Children's House

3 years to 6 years

Monday-Friday

7:00 am – 6:00pm

#### Montessori Programme for Elementary Education

6 years to 12 years

Monday-Friday

7:00 am – 6:00pm

# BECAUSE EACH CHILD IS UNIQUE!

FOR FAMILIES COMMITTED TO NURTURING THEIR CHILD'S INTELLECTUAL POTENTIAL!

- A personalised education aligned with your child's potential
- Montessori educators trained through AMI-accredited institutes, or directly trained by our AMI reference team
- Small multi-age groups, ensuring exclusive, individualised follow-up for each child
- High academic expectations aligned with both French and Anglo-Saxon curriculum standards, enabling seamless transition to any school system should your child leave our school
- Bilingual instruction from early childhood to facilitate smooth curricular transitions
- Specialist support for students with atypical learning profiles
- Provision for learners enrolled in CNED distance education programmes





# A PERSONALIZED EDUCATIONAL JOURNEY



Full immersion in French and English  
Spanish introduced from Lower Elementary (CP)



Introduction to theatre and music for early  
artistic awakening



Chess as a structured pathway to  
concentration, strategy, and foresight



Regular pedagogical excursions and  
immersive experiences in nature



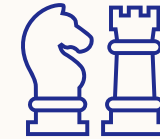
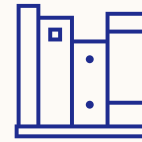
Creative arts



Sensorial and movement-based activities that  
support neuro-motor and psychomotor development



Grace and Courtesy workshops





## NATURE-BASED LEARNING COMES TO OUR SCHOOL!

- Over **1,500 m<sup>2</sup> of outdoor space** dedicated to free movement, observation, and discovery
- **Nature-based experiences:** gardening, life sciences, observation of native flora and fauna, **Nature-Based Education**
- **Environmental awareness and exploration of biodiversity** integrated into daily learning



# FAMILY SUPPORT!

WE WORK IN CLOSE PARTNERSHIP WITH FAMILIES WHO SEEK SUSTAINED, HIGHLY PERSONALISED GUIDANCE FOR THEIR CHILD. OUR FAMILIES BENEFIT FROM EXCLUSIVE, CHILD-CENTRED SUPPORT THROUGHOUT THE SCHOOL JOURNEY!



## Individualised follow-up with parents

Academic progress review meeting,

## Pedagogical assessment

To ensure exclusive, individualised follow-up for each child.

## Individualised learning progression plan

Developed in collaboration with the teaching team.

## Monthly and/or termly progress report

In collaboration with the teaching team.

## Parent workshops

Educational-themed workshops for parents



# A TRUSTED NETWORK OF MONTESSORI INSTITUTIONS



🌍 A growing community of schools established since 2018 on Reunion Island:

- ◆ Trilingual Montessori School of Saint-Pierre
- ◆ Bilingual Montessori School of Saint-Louis
- ◆ Montessori Middle School of Saint-Pierre







# ENROLLMENT & TUITION

	TUITION PACKAGE		
	ESSENTIAL (nursery and pre-school only) 15 000 Rs	INTERMEDIARY 21 000 Rs	COMPLETE 25 000 Rs
Morning School until 11:30 am	X		
Full Day School until 3:30 pm		X	X
Childcare 7:00 a.m. to 8:00 a.m.	X	X	X
Childcare 3:30 pm to 6:00 pm			X

First registration fees      Rs 75'000

Annual Deposit Fund      Rs 30'000

Account holder (BCP Bank) :      The Montessori International Children's School Ltd

Account number      20992611000000

BIC      BAIMMUMU

IBAN      MU08BAIM1401020992611000000MUR

Elevating competencies.  
Revealing distinction and achievement!  
Thank you for your trust!



Ecole Montessori Internationale du Nord



(+230) 5533-1565



hello@ecolemontessoridunord.com



www.ecolemontessoridunord.com

